

# WOLF<sup>®</sup>

*Hydraulic Rock Drill Attachment*



The **SONIC** series is an excellent choice in rock and soil drilling rigs, with a variety of surface hammer possibilities or with a bottom hammer rotator. They can be used in Geotechnics, Foundation, Civil Construction services in general. This equipment generates high productivity with low operating costs and 100% Brazilian technology.



## BENEFITS

- ▶ Multiple functions: Drilling, Digging and Breaking;
- ▶ Reduction of diesel consumption, the same as the excavator;
- ▶ Low maintenance cost;

## AVAILABLE ITEMS



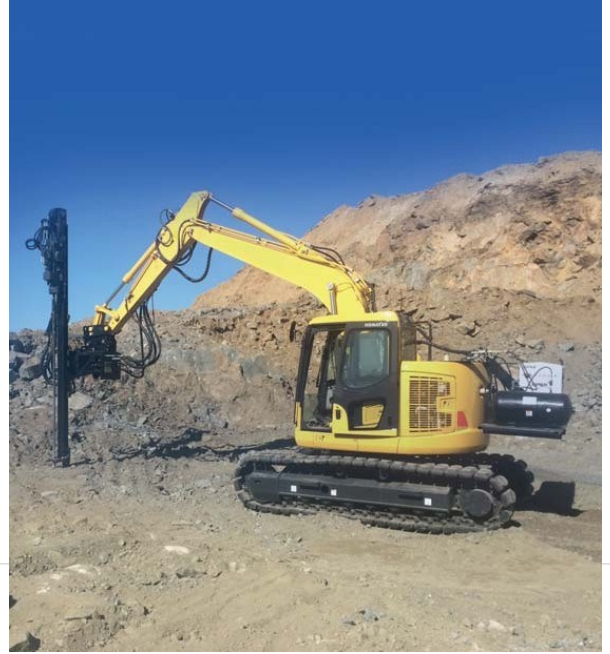
## TECHNICAL DATA

- ▶ Drilling diameters between 1" to 18" (25 to 450mm \* upon request);
- ▶ Radio Control Operation;
- ▶ Advance Motor with Planetary Gearbox and Brake
- ▶ 360° boom swivel;
- ▶ Hydraulic Centralizer (Optional) for Surface Hammers;
- ▶ Shank Changer for 1 Shank (Optional) for Surface Hammers.

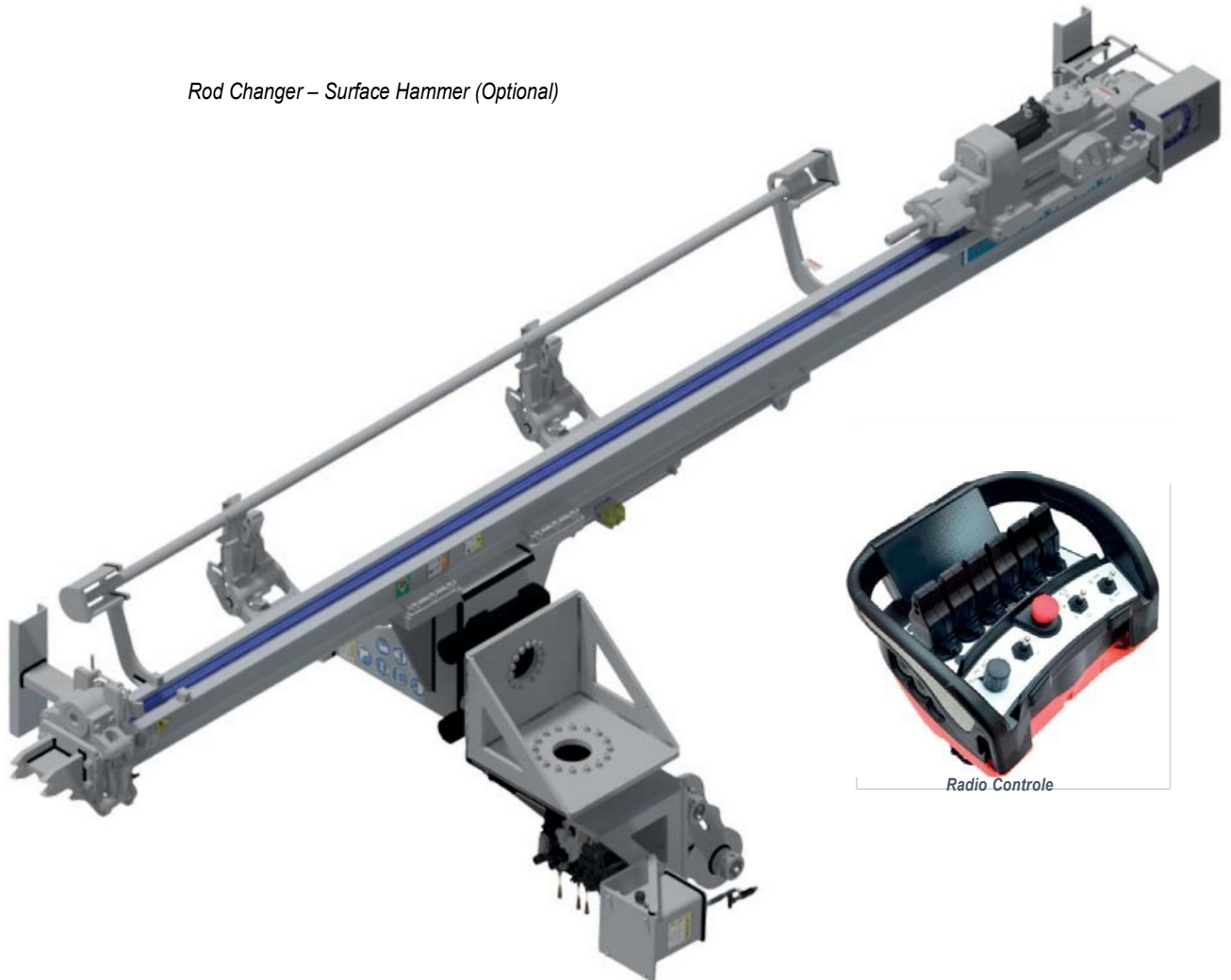
MODEL	MW-140 / 120HR	EX-530X	MW80A-57	MW80A-125	W19
<i>Air Consumption</i>	600 CFM – 700 CFM (14 -20 m <sup>3</sup> /min) 375 – 600 CFM (11 – 17 m <sup>3</sup> /min)	24 GPM 90,84 L/Min	16 GPM 60,56 L/Min	24 GPM 90,84 L/Min	180 CFM 120 L/min 140 bar
<i>Work Pressure</i>	2176 psi	2500 psi	2500-4000 psi	2500-4000 psi	140 bar -2.030 psi
<i>Impact Power</i>	9,3 kW / 8,5 kW	10 kW	-	-	19 kW
<i>Torque Rotation</i>	650 Nm	110 Nm	2250 Ft/lbs	7400 Ft/ lbs	750 Nm (533 lbf/ft)
<i>RPM Rotation</i>	0 -180	150 - 300	0 - 500	0 - 300	0 - 150
<i>Drilling Diameter</i>	2" - 4"	1" - 2"	3. 1/2" - 10"	3.5" - 18"	2. 1/2" - 3. 1/2"
<i>Application</i>	Geotechnics and Civil Construction	Geotechnics and Civil Construction	Geotechnics and Civil Construction	Geotechnics and Civil Construction	Geotechnics and Civil Construction

## ACCESSORIES (Optional)

- ▶ Digital Inclinometer;
- ▶ Water Cleaning System;
- ▶ Installing the Compressor Support at the rear of the mini excavator;
- ▶ Compressor activation in the cabin;
- ▶ 360 degree drill positioning on the X and Y axes;
- ▶ Hydraulic Centralizer;
- ▶ Rod Changer;
- ▶ 720 degrees of Positioning.

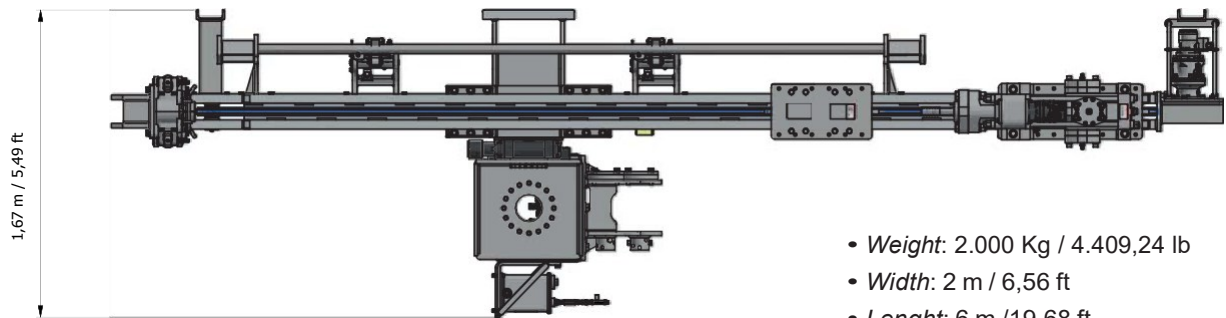
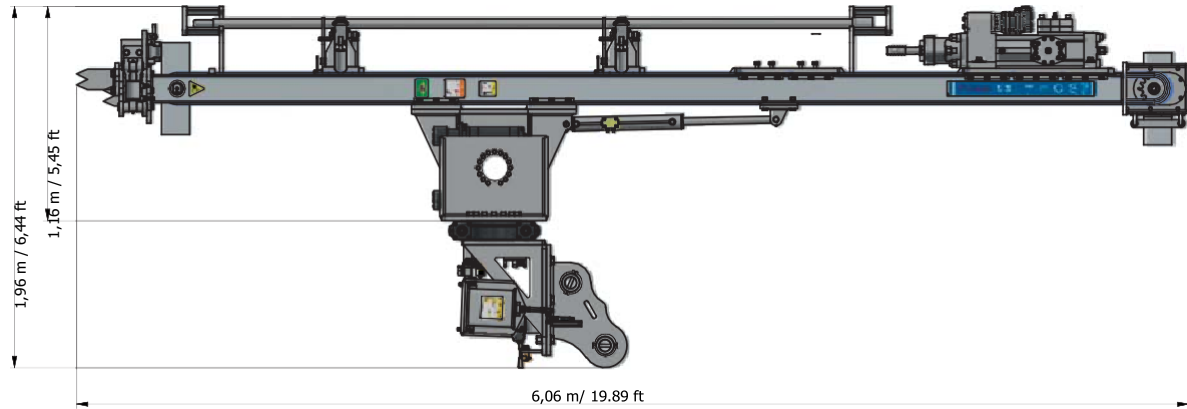


*Rod Changer – Surface Hammer (Optional)*

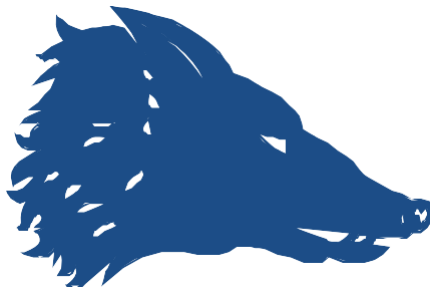


*Radio Controle*

## DIMENSIONS FOR TRANSPORT



- *Weight:* 2.000 Kg / 4.409,24 lb
- *Width:* 2 m / 6,56 ft
- *Length:* 6 m / 19,68 ft
- *Height:* 1,3 m / 4,26 ft



[www.wolfdrill.com](http://www.wolfdrill.com)

HEADQUARTER  
United States

WOLF Americas

@ info@wolfdrill.com

☎ +1 407 704 - 2051

FACTORY  
BRAZIL

Brazil / Indaiatuba-SP

@ info@wolf.com.br

☎ +55 (19) 3825 6530

WOLF Equipamentos, reserves the right to alter specifications without Notice.  
Machines shown in pictures may be equipped with options.